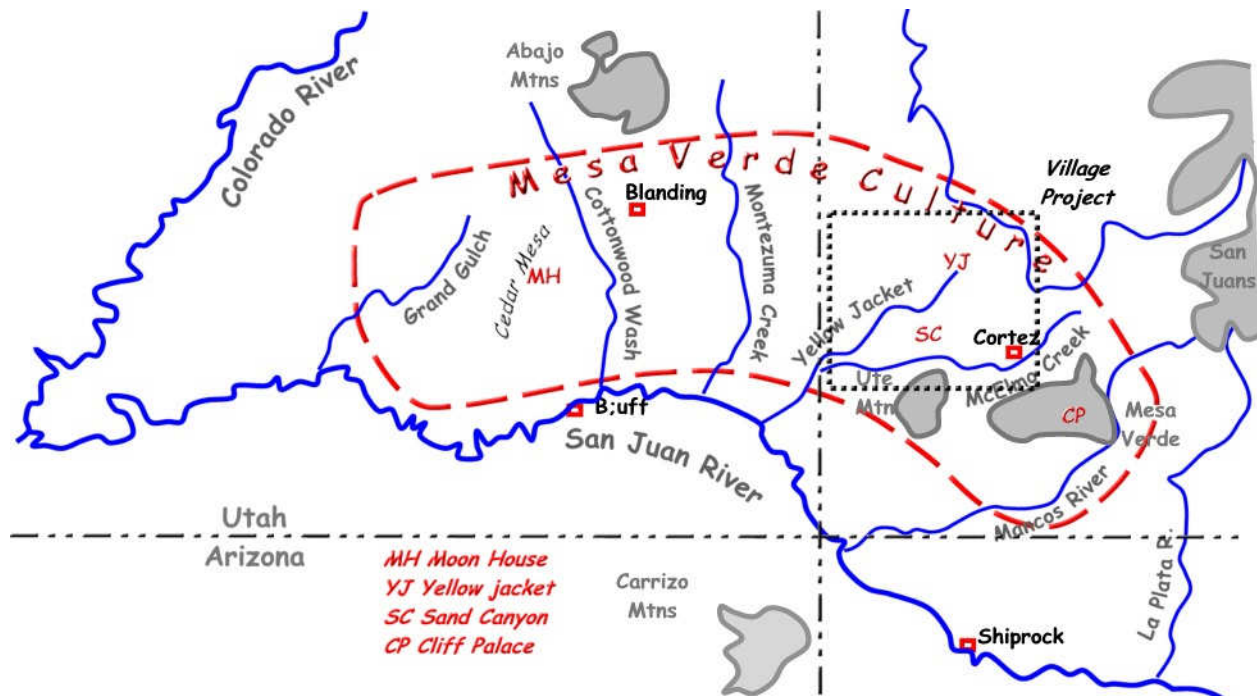


## *Anasazi Adventure Tours*

For 700 years, between 600 and 1300 A.D., ancient Anasazi lived in the Four Corners Region as part of the Mesa Verde culture. The Mesa Verde culture was bounded by the Colorado River on the west, the San Juan River on the south, and lies within the triangle of the Abajo, Carrizo, and San Juan mountains.

Today, one can visit quite a range of ruins, from the highly controlled Cliff Palace to captivating, pristine sites of Grand Gulch and Cedar Mesa. Armed with digital camera, one can capture deep Anasazi memories with high dynamic range at Magic Hour, that enchanting time around sunrise and sunset.

The ancient Anasazi (now ancestral Puebloans) farming-based culture was part of a much wider cultural region of Mesa Verde and beyond. Year-round villages began as clustered pit houses, evolving into larger pueblos, cliff dwellings, and communities. Over time, population pressures, overused soils, as well as shifting climate and precipitation patterns began to compromise the area's natural resources. By 1300 AD, ancestral Anasazi moved to the south, east, and west, where descendants live today as modern day Pueblo Indians of the Four Corners.



Three classes of Four Corners Pueblo III ruins encompass our Anasazi heritage.

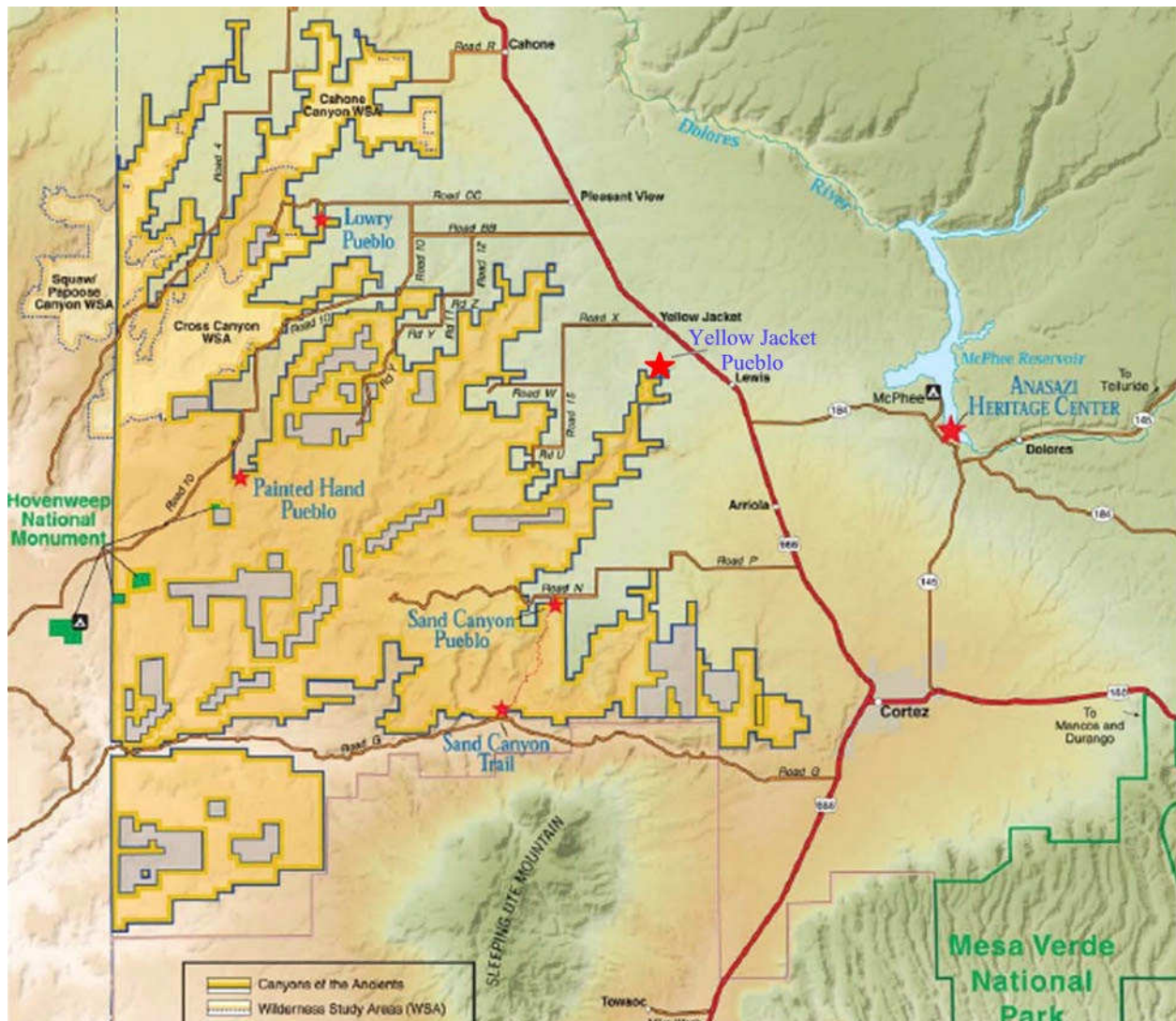
1. Classic ruins such as Mesa Verdes' *Cliff Palace*.
2. Accessible ruins such as Cedar Mesas' *Moon House*.
3. Tumbled ruins such as Canyon of the Ancients' *Yellow Jacket*.

## Where Will We Go?

The world is familiar with the gorgeous yet secretive aspects of *Cliff Palace*. Several National Parks are famous for their beautiful Anasazi architecture. Mesa Verde is classed as a world heritage site, a startling reminder of our national heritage. That almost pristine indescribable beauty effortlessly draws the devoted fine art photographer with repeated attraction. But, is such a photographer aware one can not always go where light and best shot demand?

Then, many are unaware of *Yellow Jacket* or sister sites *Sand Canyon* and *Lowry*. Yet these ruins are the center of a 700 year Mesa Verde community in Colorado and Utah. *Yellow Jacket* was one of the largest continuous pueblo community occupations in Mesa Verde history. Shoot where you will...

Far fewer are familiar with *Cedar Mesa* and *Grand Gulch* in Utah. *Moon House* is a hidden gem whose far away aspect can only be reached with a trek and canyon climb. Is the avid photographer ready for the challenge of canyon wall climbs to be



beside and among ancient, pristine ruins almost as nature left them?

***Please, Tease Me with Some Images and Anasazi Tales!***

Come, join us as we trek, learn, shoot, and share our fascination for ancient Anasazi culture of the Mesa Verde region in the Four Corners. Through your camera lens, examine images which lift your spirits, images which brighten your portfolio's character, images which profoundly attract viewers!

Step back a thousand years; learn to *Think like an Anasazi*. Learn the last 400 years of Anasazi culture. We'll be dealing with ruins created between 900 and 1300 A.D. Most images you capture will be from architecture that's Pueblo III age (1150-1300 A.D.). Like Canyon of the Ancients, older structures have had more time to deteriorate, whether natural or otherwise, and are usually harder to find.

***Mesa Verde***

Your first trip might be to shoot *Cliff Palace* (Symbol CP in 1<sup>st</sup> Figure).



As you're certainly aware, a ranger will lead you through ruins at a designated time where you must stay on the path. Yet, this trip will start an Anasazi romance as your imagination tries to capture what it was like to 'watch' children play as swallows dance above. You will struggle to catch just a perfect orientation, light reflection, and particular shot you want.

***Canyons of the Ancients***

Descend from Mesa Verde to Canyon of the Ancients. It's located west of Cortez, Colorado under the watchful eye of Sleeping Ute Mountain. Trek among tumbled ruins in a series of washes and creeks where Anasazi repeatedly built over 700 years.

*Yellow Jacket Pueblo* (Symbol YJ in 1<sup>st</sup> Figure) is the largest known ancestral Anasazi site in the Mesa Verde region. You'll get to wander Yellow Jacket at your leisure. The site covers 100 acres and contains a minimum of 195 kivas (including



© Copyright 1998 by Crow Canyon Archaeological Center

a probable great kiva), 19 towers, a great house, and as many as 1,200 surface rooms.

It was occupied during late Pueblo II period (AD 1050-1150), and during Pueblo III period (AD 1150-1300). The site is centered in a northwest to southeast band of Pueblo III villages, reaching from southeast edge of Mesa Verde to well beyond Montezuma Creek in southeast Utah.

Sadly, most sites at Canyon of Ancients are neither resurrected nor pristine. Yet, one can trek through remnants of great towers, across Kiva tops, around room blocks, and examine catchment dams and local reservoirs for water control.

### *Cedar Mesa*

*Moon House* (Symbol MH in 1<sup>st</sup> Figure) is a small, hidden ancestral Anasazi site



on Cedar Mesa, in southeast Utah, 80 tortuous miles from Cliff Palace. This site is one of several ruins on the far-flung western edge of Mesa Verde culture. Cedar Mesa was occupied in Pueblo II/III time.

Inhabited by only a few families, site access requires you hike in, down a canyon, and up opposite canyon wall. Once there, you're free to wander about, taking advantage of the best sun angle, getting the best shot, and exploring inner habitations, nearby granaries, and other buildings.

### *Other Exciting Sites*

We are reviewing logistics of accessing other Four Corners region Anasazi sites. Any suggestions?

### *Detailed History*

Several chapters and tables are included under the Anasazi Culture menu. We discuss place in time for Anasazi life. We address culture series for sudden departure after 675 years of habitation.

### *I'm Ready: When ARE We Going!*

Whoa; hold your horses! They may be available by earliest spring, 2008!

©2008, Chopawamsic LC, All Right Reserved

[BistiArt@Smugmug.com](mailto:BistiArt@Smugmug.com)

[www.BistiArt.Smugmug.com](http://www.BistiArt.Smugmug.com)